



Rizzetta & Company

Bexley Community Development District

**Board of Supervisors' Workshop
February 12, 2024**

**District Office:
5844 Old Pasco Road, Suite 100
Wesley Chapel, FL 33544
813-994-1001**

www.bexleycdd.org

BEXLEY COMMUNITY DEVELOPMENT DISTRICT

District Board of Supervisors	Deneen Klenke	Chairman
	Nancy Pettit	Vice-Chairman
	Pete Williams	Assistant Secretary
	Stephen Babon	Assistant Secretary
	John Blakley	Assistant Secretary
District Manager	Jillian Minichino	Rizzetta & Company, Inc.
District Counsel	Alyssa Wilson	Kutak Rock
District Engineer	Jordan Schrader	Clearview Land Design

All cellular phones must be placed on mute while in the meeting room.

The Audience Comment portion of the agenda is where individuals may make comments on matters that concern the District. Individuals are limited to a total of three (3) minutes to make comments during this time.

Pursuant to provisions of the Americans with Disabilities Act, any person requiring special accommodations to participate in this meeting/hearing/workshop is asked to advise the District Office at least forty-eight (48) hours before the meeting/hearing/workshop by contacting the District Manager at (813) 933-5571. If you are hearing or speech impaired, please contact the Florida Relay Service by dialing 7-1-1, or 1-800-955-8771 (TTY) 1-800-955-8770 (Voice), who can aid you in contacting the District Office.

A person who decides to appeal any decision made at the meeting/hearing/workshop with respect to any matter considered at the meeting/hearing/workshop is advised that person will need a record of the proceedings and that accordingly, the person may need to ensure that a verbatim record of the proceedings is made including the testimony and evidence upon which the appeal is to be based.

BEXLEY COMMUNITY DEVELOPMENT DISTRICT
DISTRICT OFFICE – Wesley Chapel, FL 813-994-1001
Mailing Address – 3434 Colwell Avenue, Suite 200, Tampa, FL 33614
WWW.BEXLEYCDD.ORG

February 5, 2024

Board of Supervisors
Bexley Community
Development District

Dear Board Members:

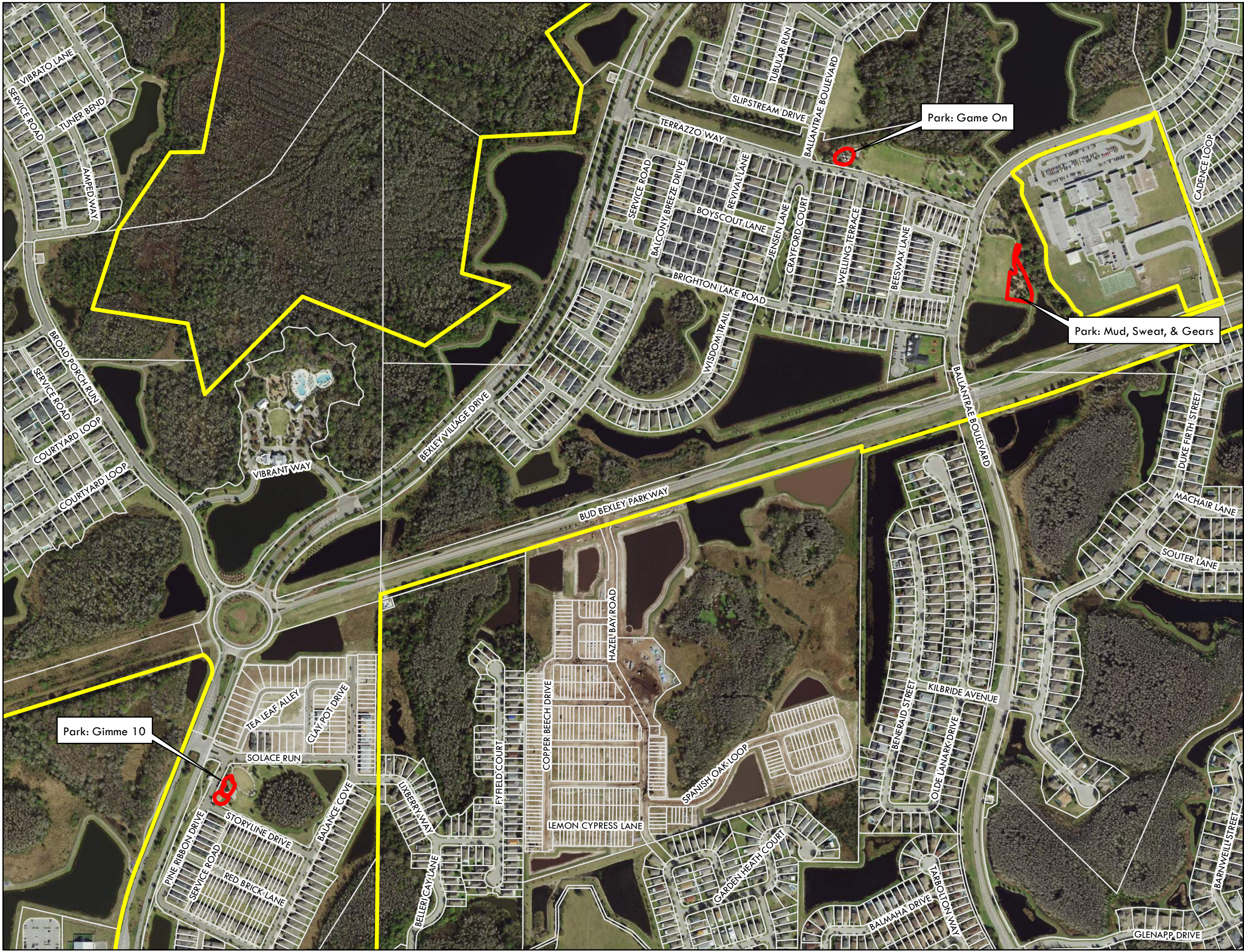
The **workshop** of the Board of Supervisors of the Bexley Community Development District will be held on **Monday, February 12, 2024, at 5:00 p.m.** at the Residence Inn Marriott Tampa Suncoast, Manatee Room, located at 2101 Northpointe Parkway, Lutz, Florida 33558. The following is the agenda for this meeting:

- 1. CALL TO ORDER/ROLL CALL**
- 2. BUSINESS ITEMS**
 - A. Discussion Regarding Playgrounds.....Tab 1
- 3. AUDIENCE COMMENTS**
 - A. *It is anticipated audience comments will commence at the earlier of 1) 7:30 p.m. or 2) the conclusion of Board of Supervisors Business. Given there is no final action of the Board at a workshop, there will be additional opportunity for public comment at the next Board meeting prior to any final Board decision.*
- 4. ADJOURNMENT**
 - A. *It is anticipated the workshop shall adjourn at the earlier of 1) 8:00 p.m. or 2) the conclusion of the workshop agenda.*

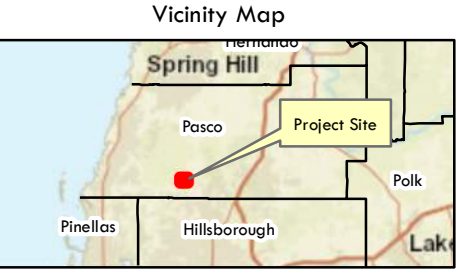
We look forward to seeing you at the meeting. In the meantime, if you have any questions, please do not hesitate to call us at (813) 994-1001.

Sincerely,
Jillian Minichino
District Manager

Tab 1



- Legend**
- Bexley CDD Playground Boundaries
 - Bexley CDD Boundary
 - Parcel Boundary



T: 26 R: 18

Notes:
Clearview Land Design, and Pasco County make no warranty, representation or guaranty as to the content, sequence, accuracy, timeliness, or completeness of any of the geodata information provided herein. Aerial: SWFWMD, 2023
Service Layer Credits: Sources: Esri, HERE, Garmin, USGS, Intermap, INCREMENT P, NRCan, Esri Japan, METI, Esri China (Hong Kong), Esri Korea, Esri (Thailand), NGCC, (c) OpenStreetMap contributors, and the GIS User Community

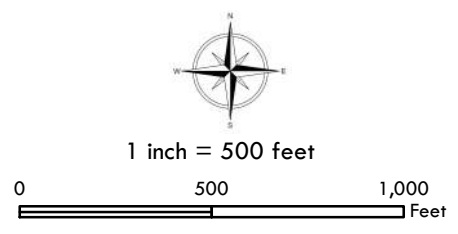


Figure: Overall Playground Map

Project: Bexley CDD

Pasco County

Filename:
Bex_CDD_Parks1_20240129_11x17_wcs

Map Date:
1/29/2024

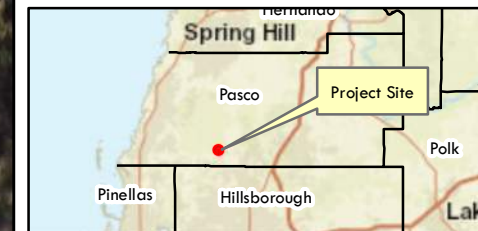
Map Prepared By:
WCS

Legend

Bexley CDD Playground Boundaries

- Gimme 10 - 8,300 ± sqft
- Parcel Boundary

Vicinity Map



S: 19 T: 26 R: 18

Notes:

Clearview Land Design, and Pasco County make no warranty, representation or guaranty as to the content, sequence, accuracy, timeliness, or completeness of any of the geodata information provided herein. Aerial: SWFWMD, 2023

Service Layer Credits: Sources: Esri, HERE, Garmin, USGS, Intermap, INCREMENT P, NRCan, Esri Japan, METI, Esri China (Hong Kong), Esri Korea, Esri (Thailand), NGCC, (c) OpenStreetMap contributors, and the GIS User Community



1 inch = 50 feet

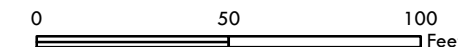


Figure: Playground Map

Project: Bexley CDD

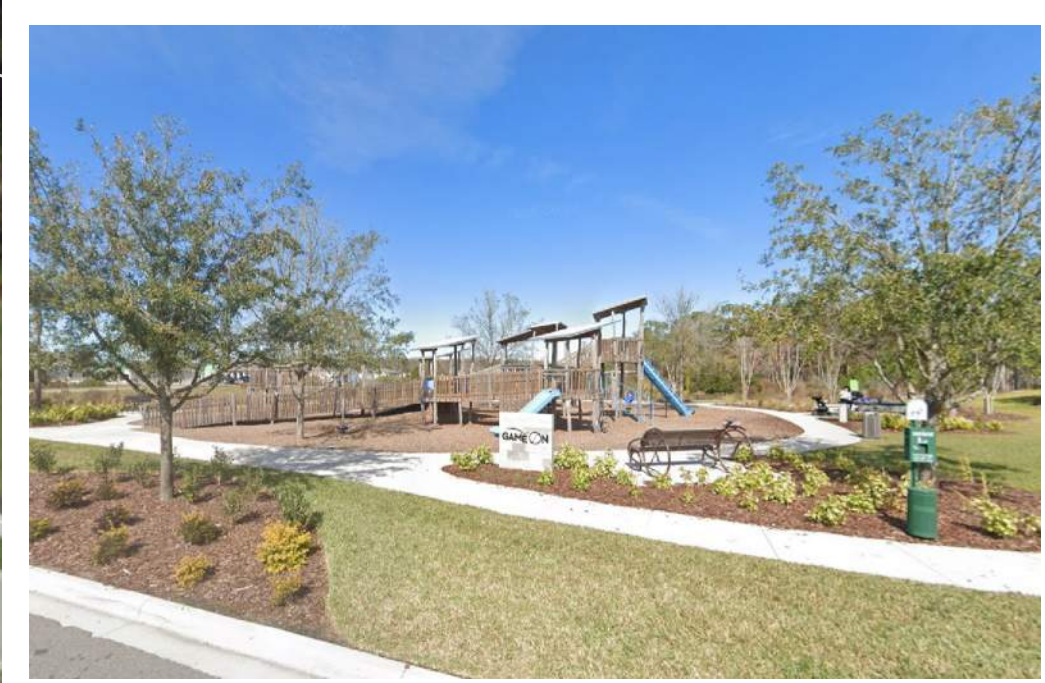
Pasco County

Filename:
Bex_CDD_Parks2_20240129_11x17_wcs

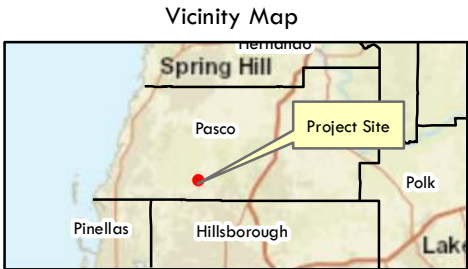
Map Date:
1/29/2024

Map Prepared By:
WCS





- Legend**
- Bexley CDD Playground Boundaries**
- Game On - 7,000 ± sqft
 - Parcel Boundary



S: 17 T: 26 R: 18

Notes:

Clearview Land Design, and Pasco County make no warranty, representation or guaranty as to the content, sequence, accuracy, timeliness, or completeness of any of the geodata information provided herein. Aerial: SWFWMD, 2023

Service Layer Credits: Sources: Esri, HERE, Garmin, USGS, Intermap, INCREMENT P, NRCan, Esri Japan, METI, Esri China (Hong Kong), Esri Korea, Esri (Thailand), NGCC, (c) OpenStreetMap contributors, and the GIS User Community

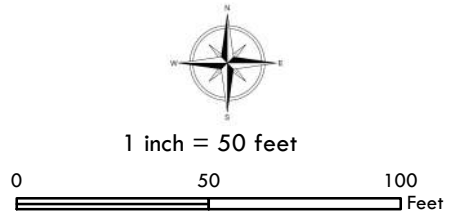


Figure: Playground Map	
Project: Bexley CDD	
Pasco County	
Filename: Bex_CDD_Parks3_20240129_11x17_wcs	
Map Date: 1/29/2024	Map Prepared By: WCS

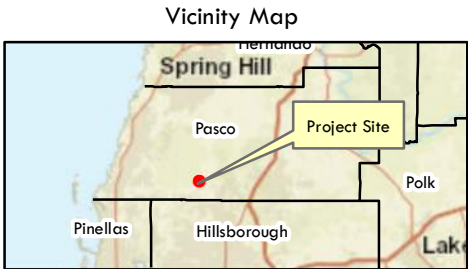


Legend

Bexley CDD Playground Boundaries

Mud, Sweat, and Gears - 21,000 ± sqft

Parcel Boundary



S: 17 T: 26 R: 18

Notes:

Clearview Land Design, and Pasco County make no warranty, representation or guaranty as to the content, sequence, accuracy, timeliness, or completeness of any of the geodata information provided herein. Aerial: SWFWMD, 2023

Service Layer Credits: Sources: Esri, HERE, Garmin, USGS, Intermap, INCREMENT P, NRCan, Esri Japan, METI, Esri China (Hong Kong), Esri Korea, Esri (Thailand), NGCC, (c) OpenStreetMap contributors, and the GIS User Community

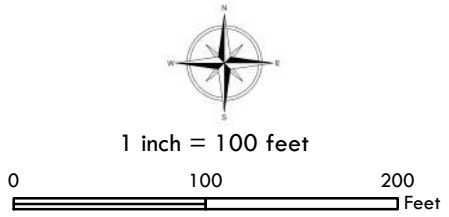


Figure: Playground Map	
Project: Bexley CDD	
Pasco County	
Filename: Bex_CDD_Parks4_20240129_11x17_wcs	
Map Date: 1/29/2024	Map Prepared By: WCS